

**IRIS' IRMA 6** counting sensor features 80,000 pixel sensor with 3D time-of-flight technology.

## Optimum Accuracy from the Latest Counting Sensor

The sixth generation of counting sensors from Iris is the IRMA 6, providing optimum accuracy and reliability thanks to well-proven time-of-flight technology (ToF).

For train, tram, platform screen door, buses, or ferry boats, the IRMA 6 offers real-time capture of passenger load; precise revenue sharing facilitated by highly accurate monitoring of transportation services, based on revenue passenger miles and height classification of passengers; and demand-based management of fleet deployment.

The latest sensor has higher resolution and offers a wider area of coverage. The 80,000-pixel sensor has 3D ToF.

IRMA 6 is all about the 3Cs:

- Collecting data
- Communicating data
- Crunching data

The sensor is IoT ready, connected right to the router and can help transit agencies provide passengers with more information in real time.

[www.irisgmbh.de](http://www.irisgmbh.de)

## INIT: Ready for e-Mobility

"Ready for e-mobility" was the theme for Init's showcase at InnoTrans 2018.

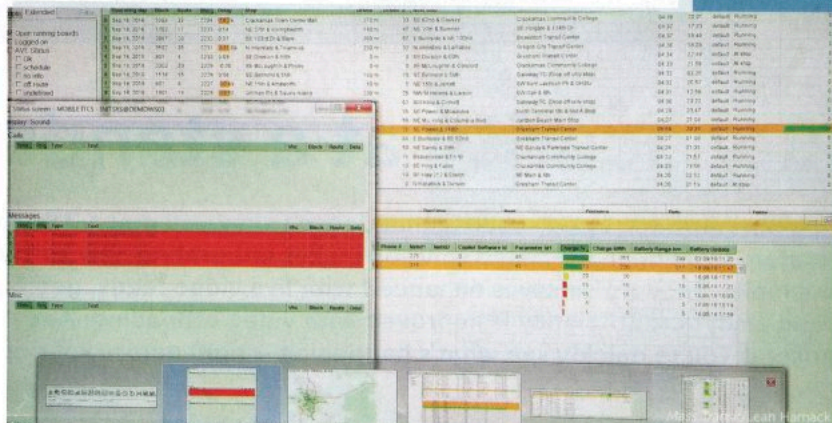
Electric buses are rolling out in cities around the globe and planning for electromobility will require smart systems to provide accurate data to help transit operators prepare a variety of analysis on things such as timetables, charging times, ranges and energy consumption.

INIT's Intermodal Transport Control System (MOBILE-ITCS) provides an overview of important vehicle information for the dispatcher, including the current charge level and remaining range. Operators can set thresholds, which will then show a color indicator to reflect the remaining charge level and warnings in the status display. A warning can be displayed when a vehicle falls below a charge level or below the remaining range threshold.

MOBILECharge can provide operators with intelligent charge management. It connects charging points, electricity supply and operational information systems to help in developing charge planning. Operators can predict energy requirements and load management.

INIT provides a comprehensive system for e-bus operation from planning stages prior to procurement through operating your fleet.

[www.initse.com](http://www.initse.com)



**MOBILE-ITCS PROVIDES** a warning if the remaining range or the charge level of an electric vehicle falls below a set threshold.