



Eigenkapitalforum 2020

Integrated. Innovative. International.

init

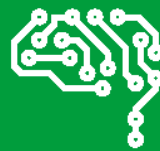
Integrated. Innovative. International

Integrated



We offer a **fully integrated planning-, dispatching-, and ticketing system**

Innovative



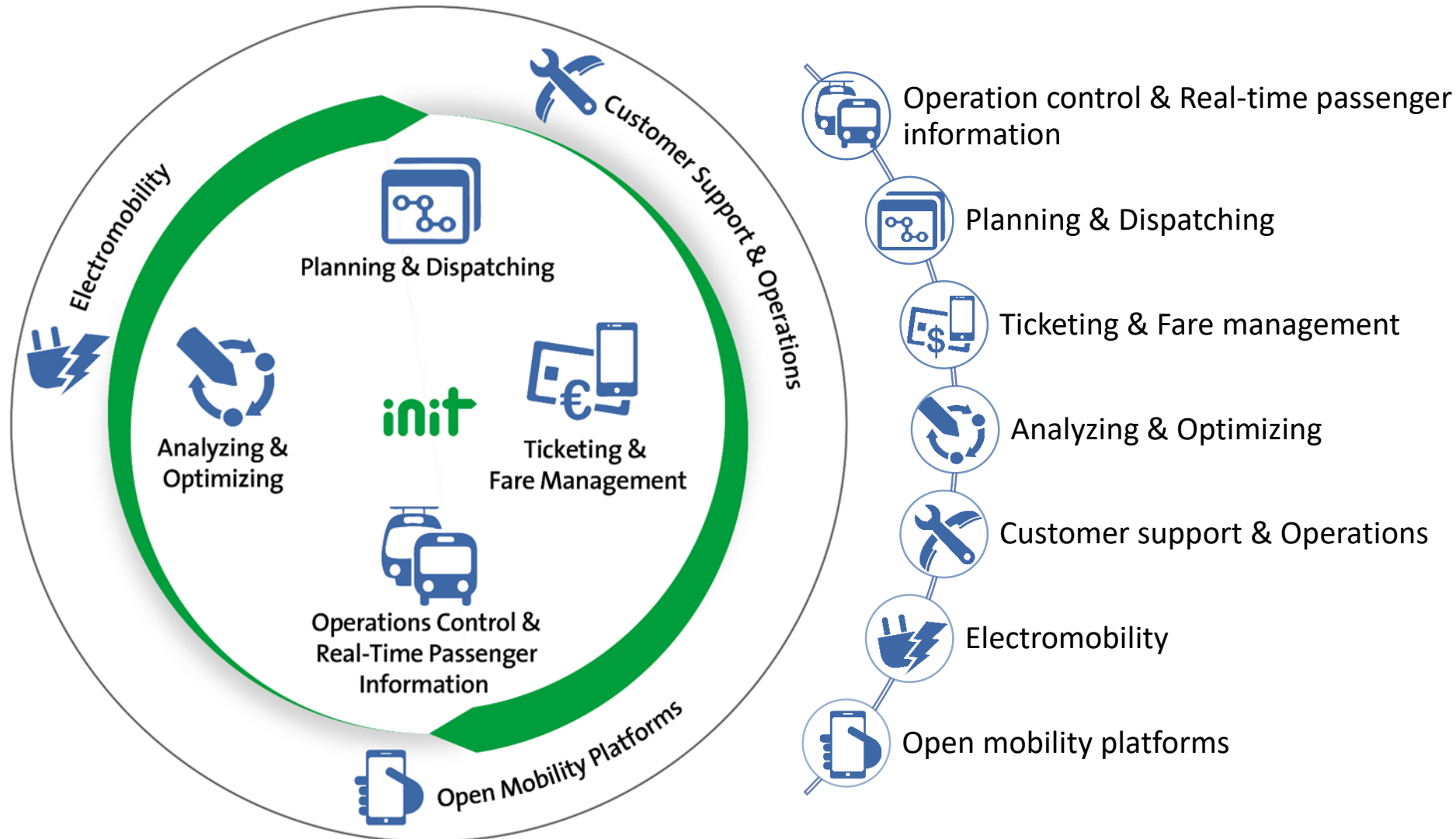
We conduct our research on an **international** scale, think outside the box, know the sector inside out and steer **new ideas** for the benefit of our customers

International

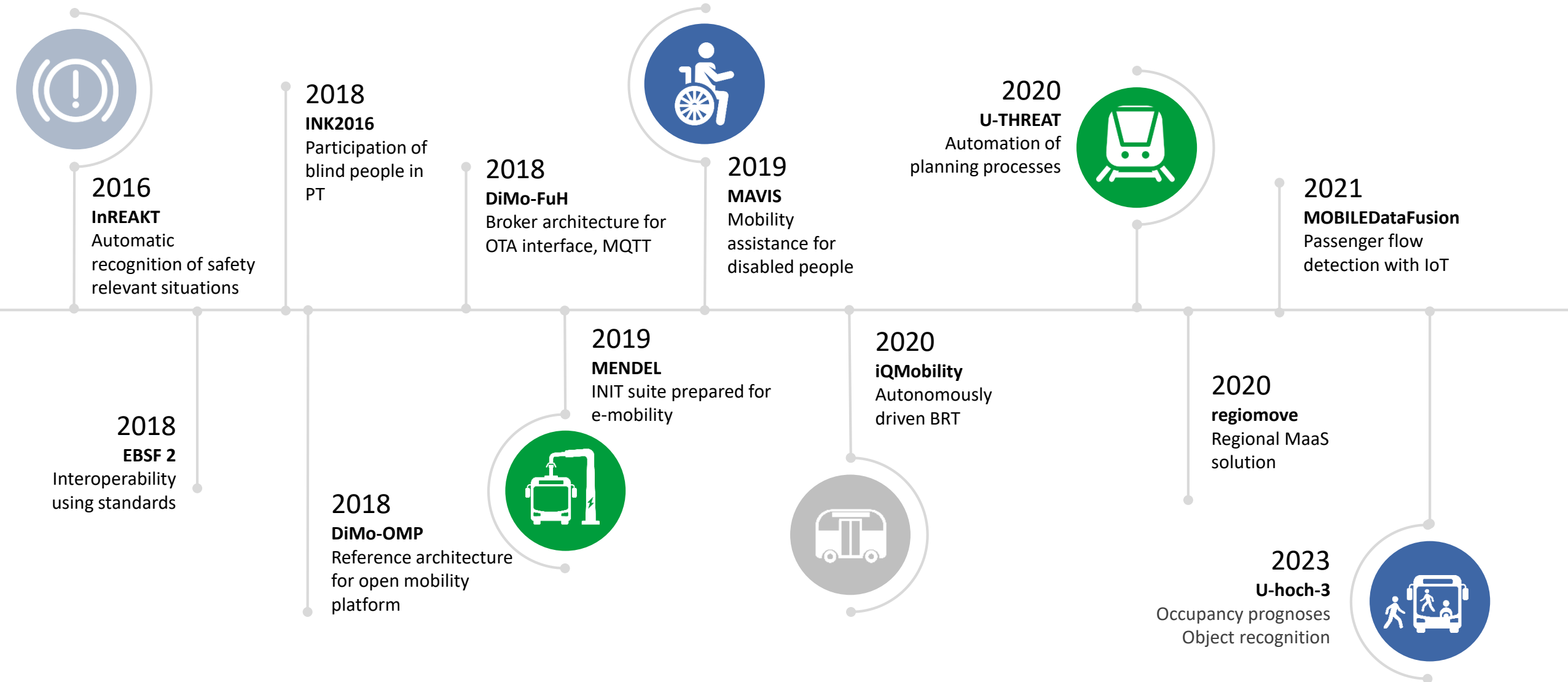


We always find **targeted solutions** for regional requirements - for 20 or 2,000 vehicles, for metropolises or rural regions

Integrated solutions for public transport



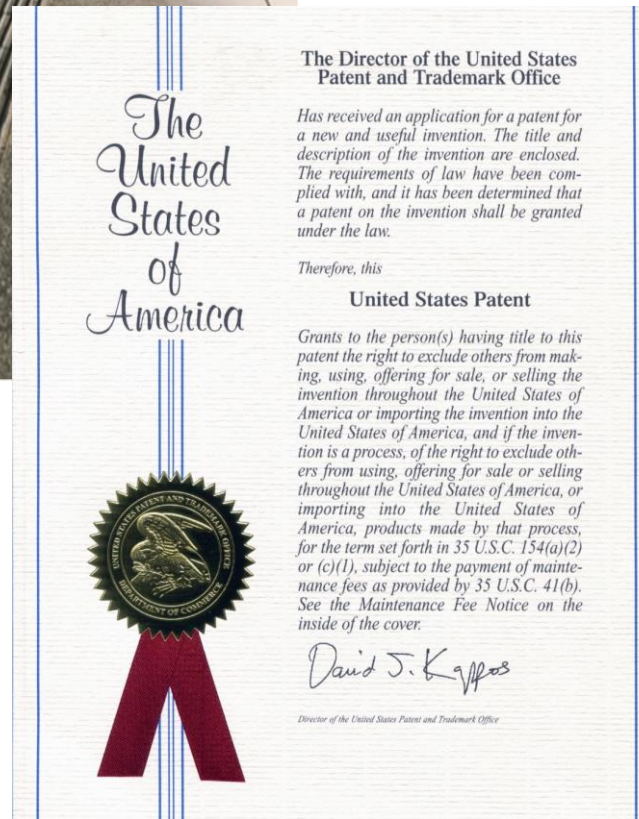
Recent research projects





Future MOBILEguide - Passenger guidance system

- When the vehicle enters, free spaces are displayed, e.g. signalling at the platform floor
- More convenience for travellers
- COVID-19: Physical distancing
- Shortening of the stop times at the stop
- Optimization of the usage of the existing infrastructure
- Cost-savings

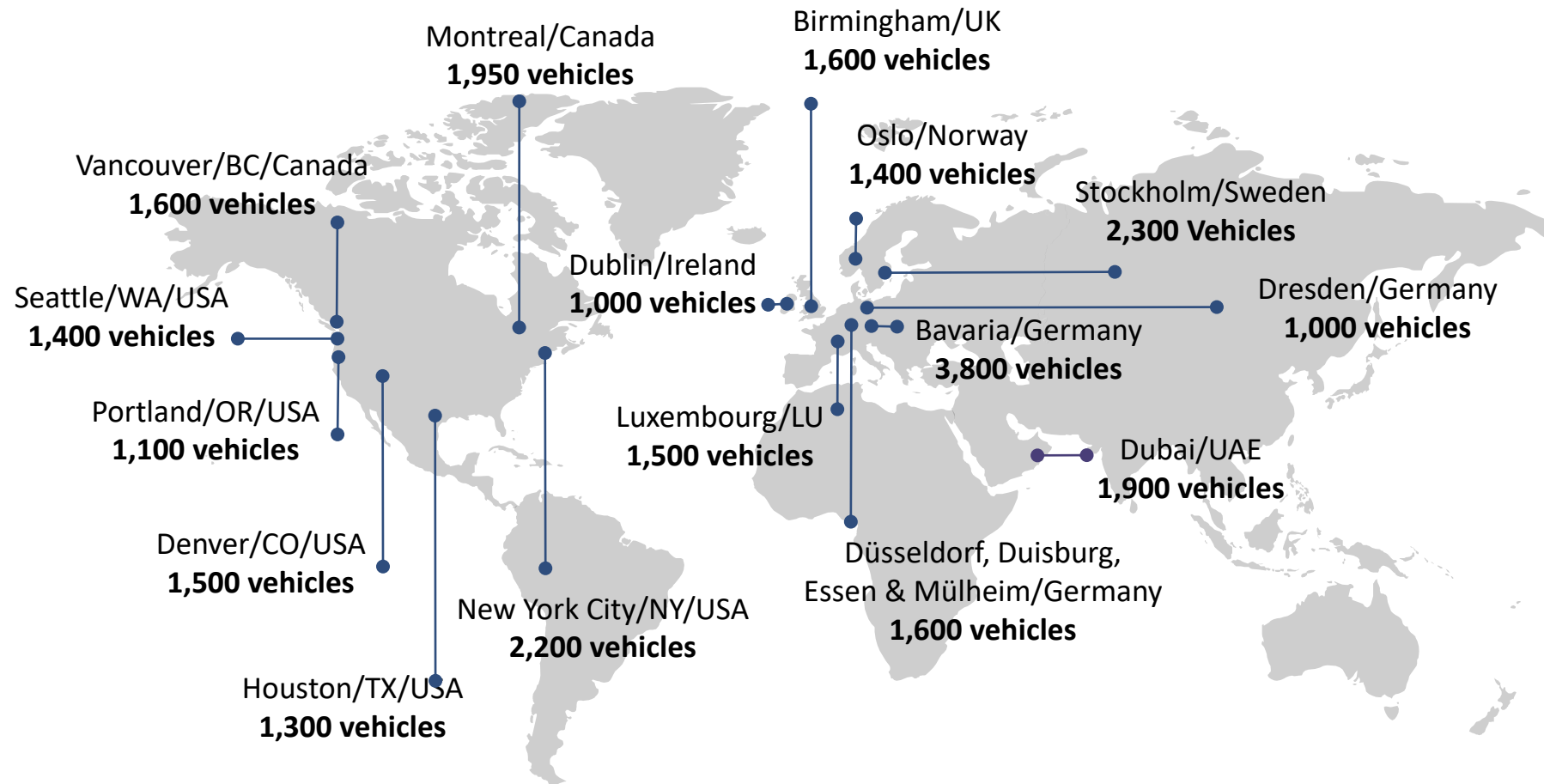


init group worldwide

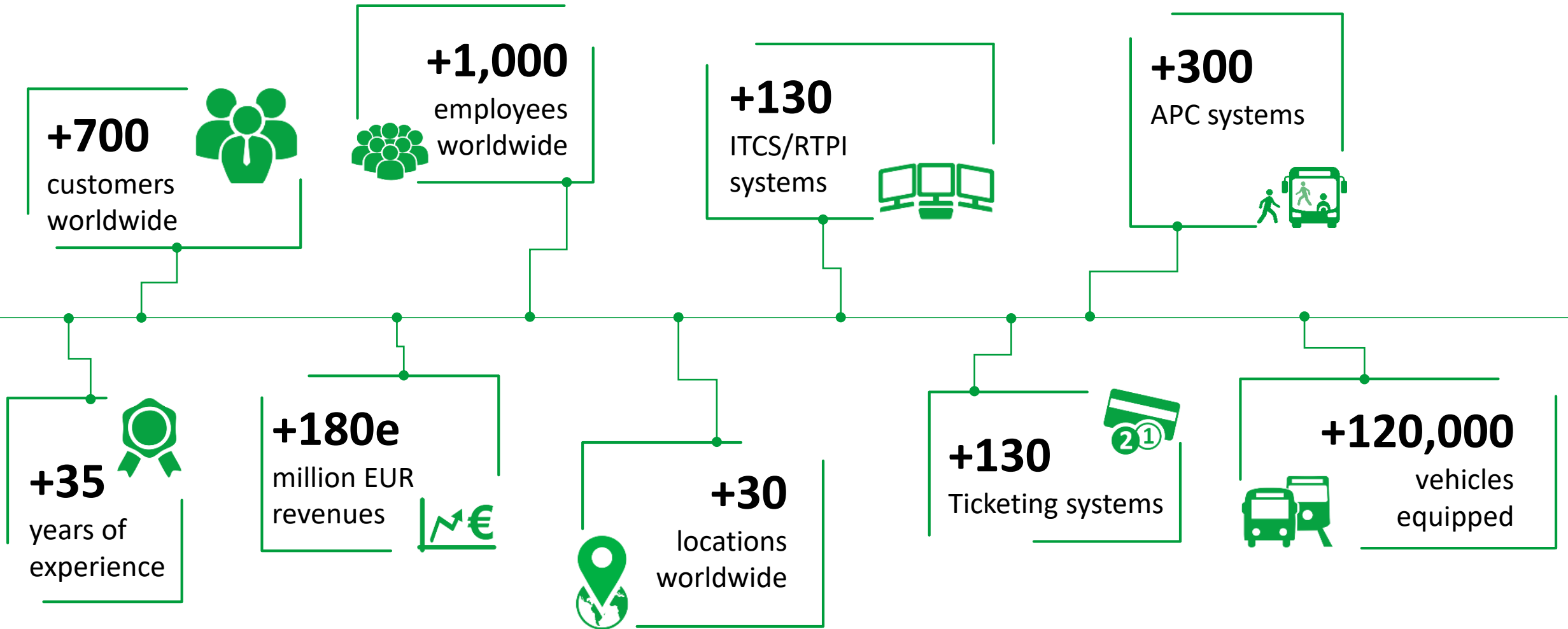


Worldwide references

Projects with more than 1,000 vehicles



init at a glance



Technical business segments

- **Electronic ticketing**
(high software share)
 - Vending devices (stationary, mobile, smartphone)
 - Back-office system (account and fare data management, accounting systems, ...)
- **ITCS – Intermodal transport control system**
(high software share)
Real-time information and sub systems
- **APC - Automatic passenger counting**
(high software share)
- **Timetable planning and dispatching of drivers and vehicles**
(100% software share)
- **Further modules** e.g. traffic signal priority, announcement technology, display technology, diagnostic systems ...

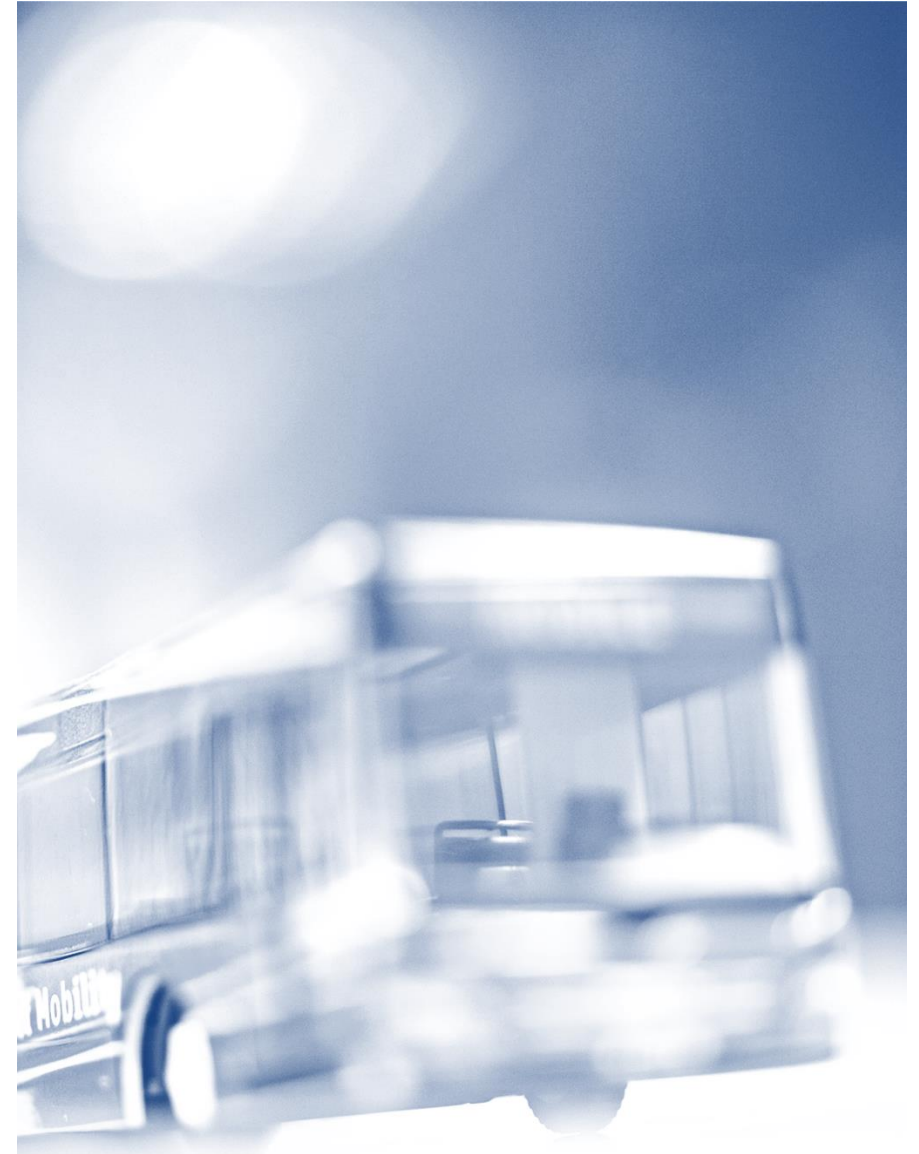
45%

25%

20%

5%

5%



Economic business segments

Hardware & software products in **project business**

35%

Software & hardware **maintenance**, incl. hotline

20%

Delivery business (iris,...)

20%

Follow-up orders from projects: devices, licenses and services

20%

New business segment: **operations**






5%



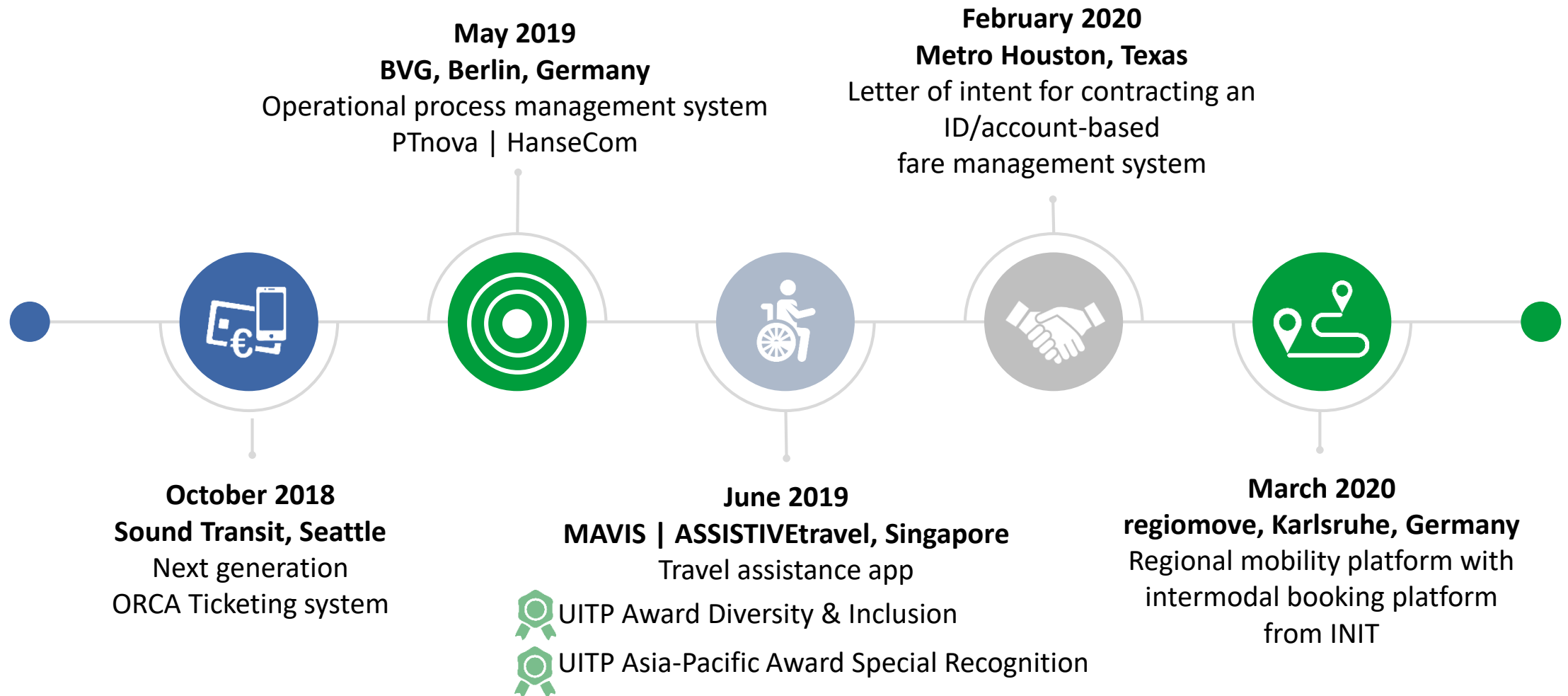
45% recurring revenues



Growth | new members of the init group

 <p>DResearch Fahrzeugelektronik GmbH Berlin, Germany</p>	 <p>Hansecom BY Minsk, Belarus</p>	 <p>INIT office Seattle, WA, USA</p>	 <p>IRIS ASIA-PACIFIC PTY LTD, Melbourne, Australia</p>	 <p>INIT Ltd. Maynooth, Ireland</p>
With effect from 1 January 2020	Founded on 26 December 2019	Opening on 10 December 2019	Founded on 16 July 2019	Founded on 21 March 2018
Derovis GmbH 100% subsidiary of DResearch Fahrzeugelektronik GmbH	Shareholdings: 99% HanseCom 1% INIT GmbH	Current: Team of 15 employees Further expansion planned	Sales Office Asia-Pacific	Current: Team of 15 software developers Further expansion planned

Recent milestone projects



Coping with COVID-19 with init products



COVID-19

Electronic payments and smart
ticketing help to keep the distance



COVID-19

Inform passengers about the
actual carload of the next train

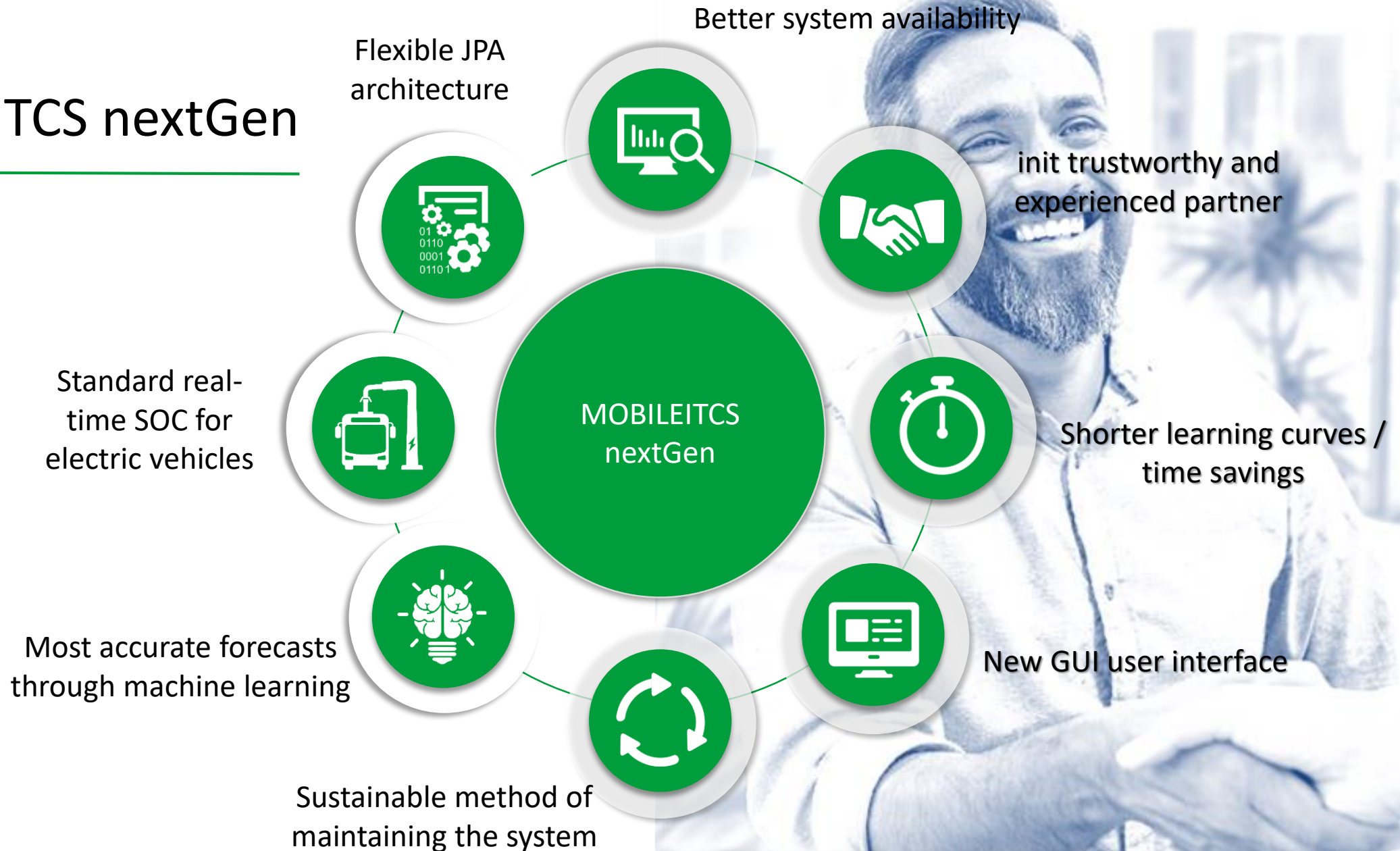


COVID-19

Serve reduced numbers of
passengers efficiently

Growth

MOBILE-ITCS nextGen



Growth

ITCS goes rail

MOBILE-ITCSrail

- Display of the special features of railway systems (traction, coupling/uncoupling, track change, single track, etc.)
- Train configuration management
- Extended rail-specific passenger information
- Numerous railway-specific interfaces
- Integration of MOBILE-PLAN and MOBILE-PERDIS for the advance planning of trains and train crew



Growth ASSISTIVetravel



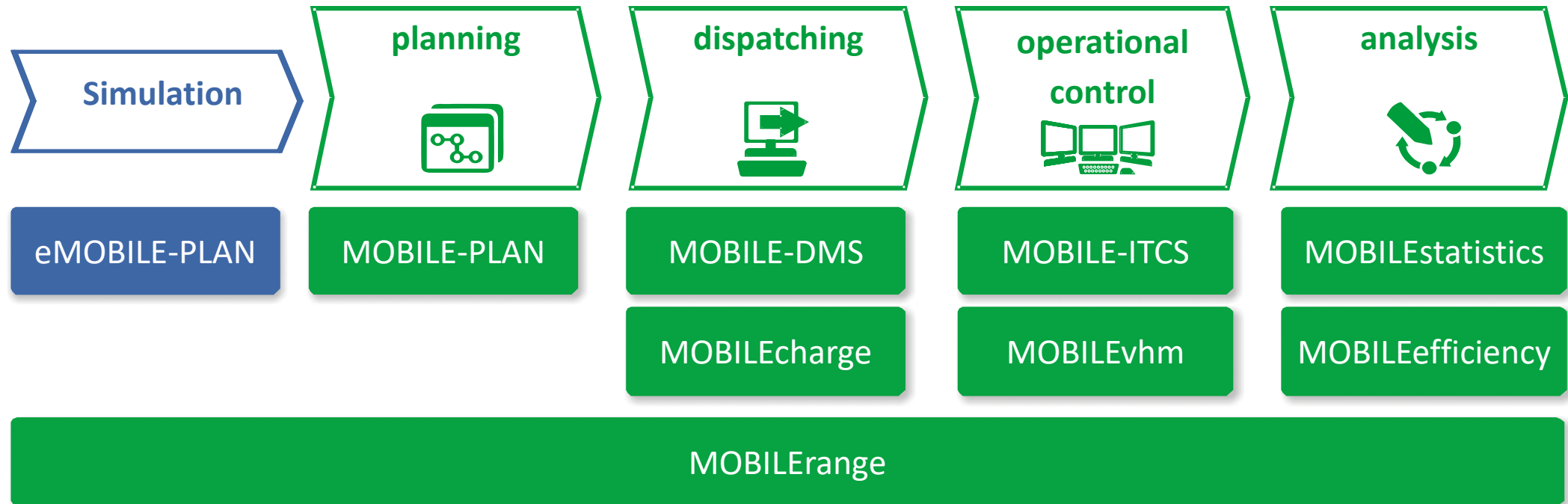
- Easy use for
 - Mobility-impaired
 - Visually-impaired
 - Hearing-impaired
- Individual planning
- Individual travel support, e.g. interior and exterior vehicle announcements and information to the bus driver
- Pilot projects in Singapore
- 2 UITP Awards:
 - » Asia Pacific Special Recognition Award
 - » UITP Innovation Award in the category „Diversity & Inclusion“



Growth Electromobility



init customers receive a complete solution from one source



Growth

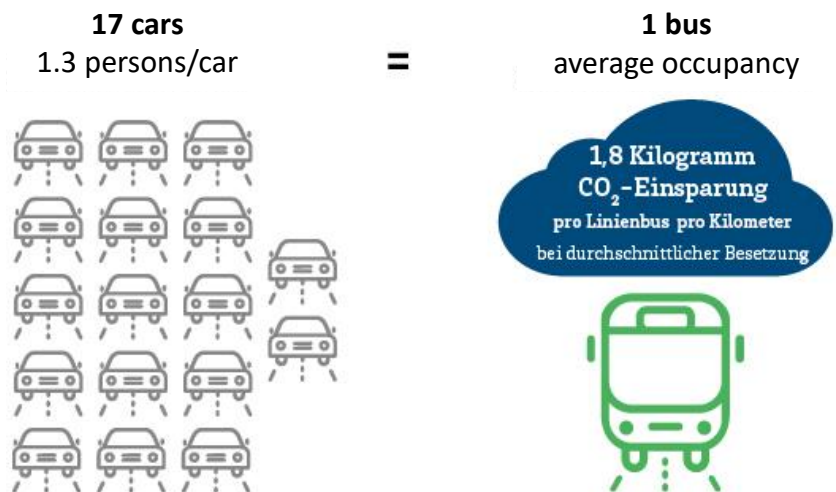
Customer support & operations

init: from technology provider to service partner

- Strong growth
- Orders secured for more than 10 years
- Strong customer loyalty



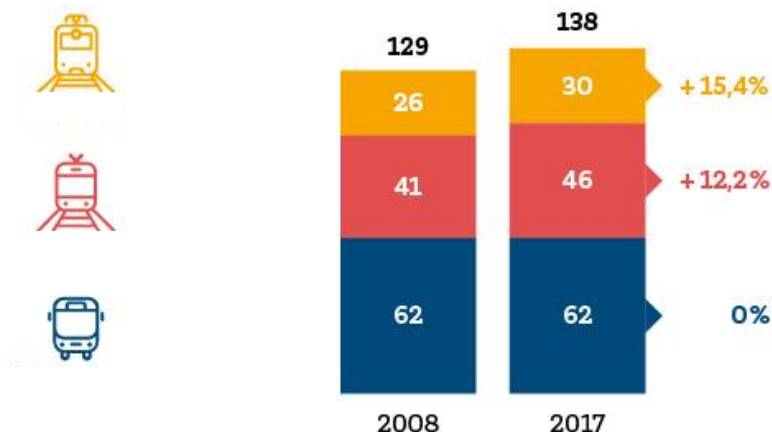
More climate-friendly local transport



A clear environmental benefit for public transport

Public transport saves a total of 10.5 million tonnes of greenhouse gas emissions. Every kilometre travelled by public transport saves 95 grams of greenhouse gases and 19 grams of nitrogen oxides on average compared to driving. Another advantage of public transport is that it relieves the roads and reduces the risk of congestion. If public transport customers were to travel by car, 86.5 billion additional car kilometres would be needed on German roads

journeys per inhabitant



138 journeys per inhabitant - never before has so much public transport been used as today

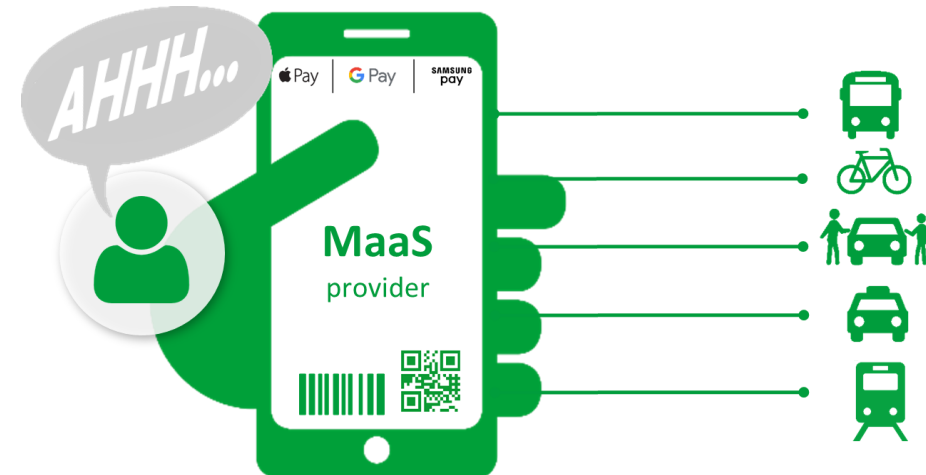
In 2017, each inhabitant boarded a bus or train an average of 138 times. In 2008, there were 129 entries (+ 7 percent)

Source: VDV-Statistik, Statistisches Bundesamt | Stand: January 2020



Future Mobility in transition

- Regiomove: Sustainability of ONE-STOP networked mobility for the ENTIRE REGION (Technology Region Karlsruhe)
- Mobility as a Service (MaaS): integration of all modes of transport and one ticket for all modes of transport



Growth and Future Prospects

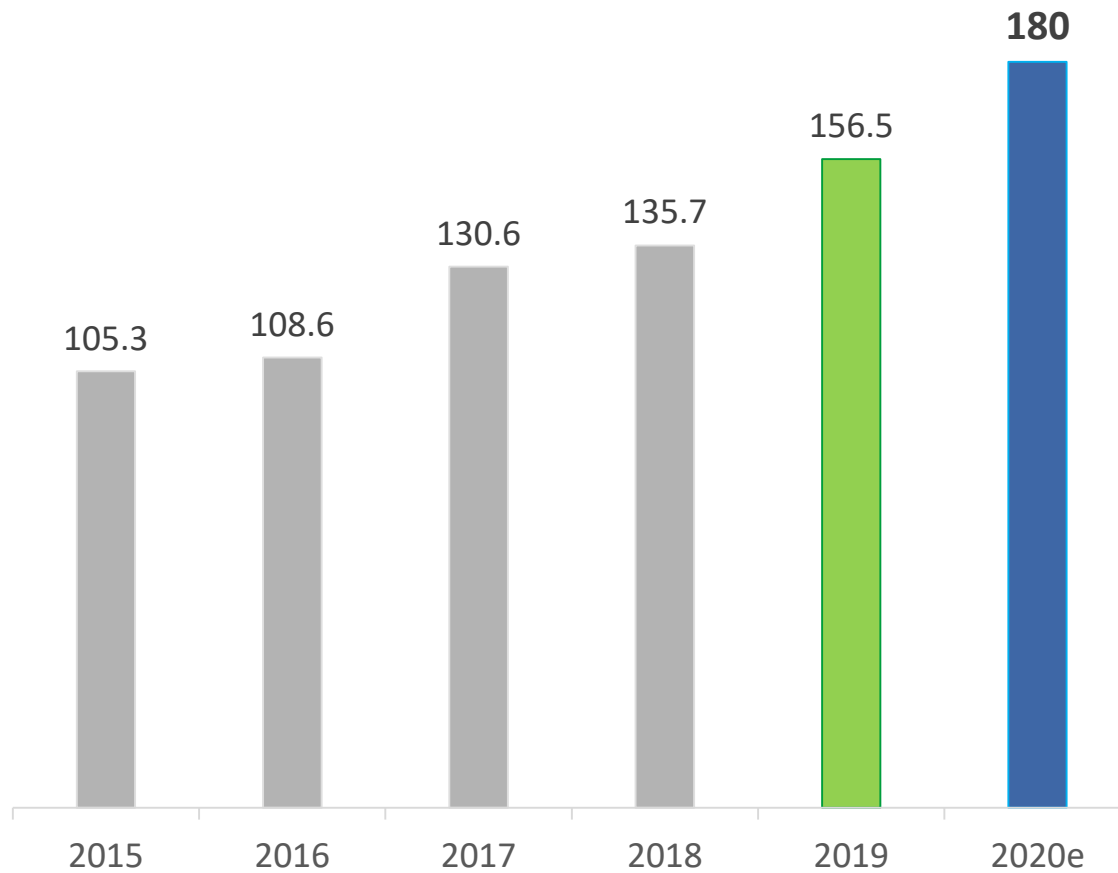
- New products with high growth rates in the market (e-ticketing, operations, etc.)
- Numerous new products in the market launch (rail, barrier-free travel assistance, etc.)
- New markets are being developed (electromobility, autonomous driving, etc.)
- High investments in R&D and personnel are increasingly paying off



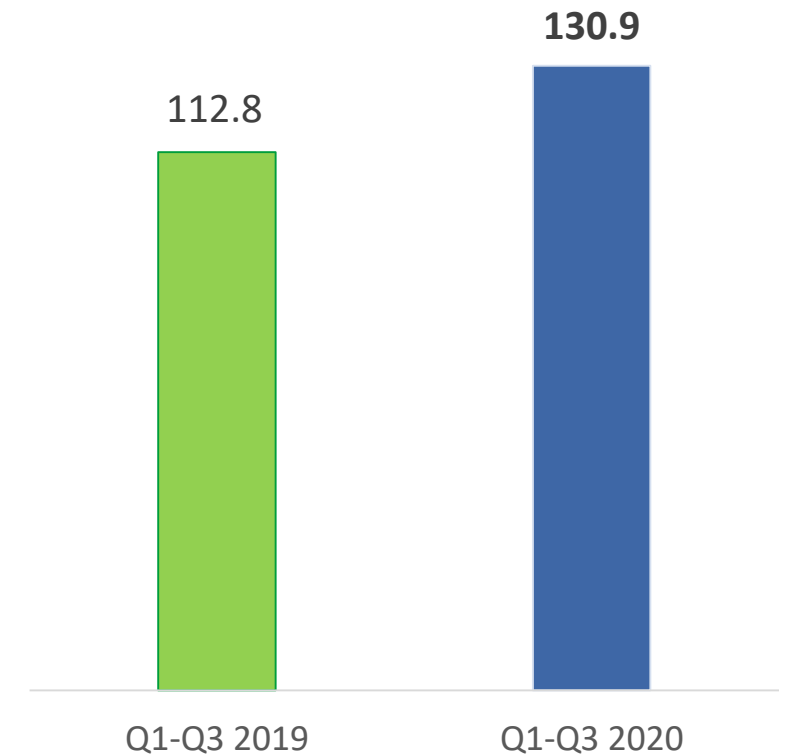
Revenues

(EURm)

Set target growth for FY 2019 achieved: + 15 %



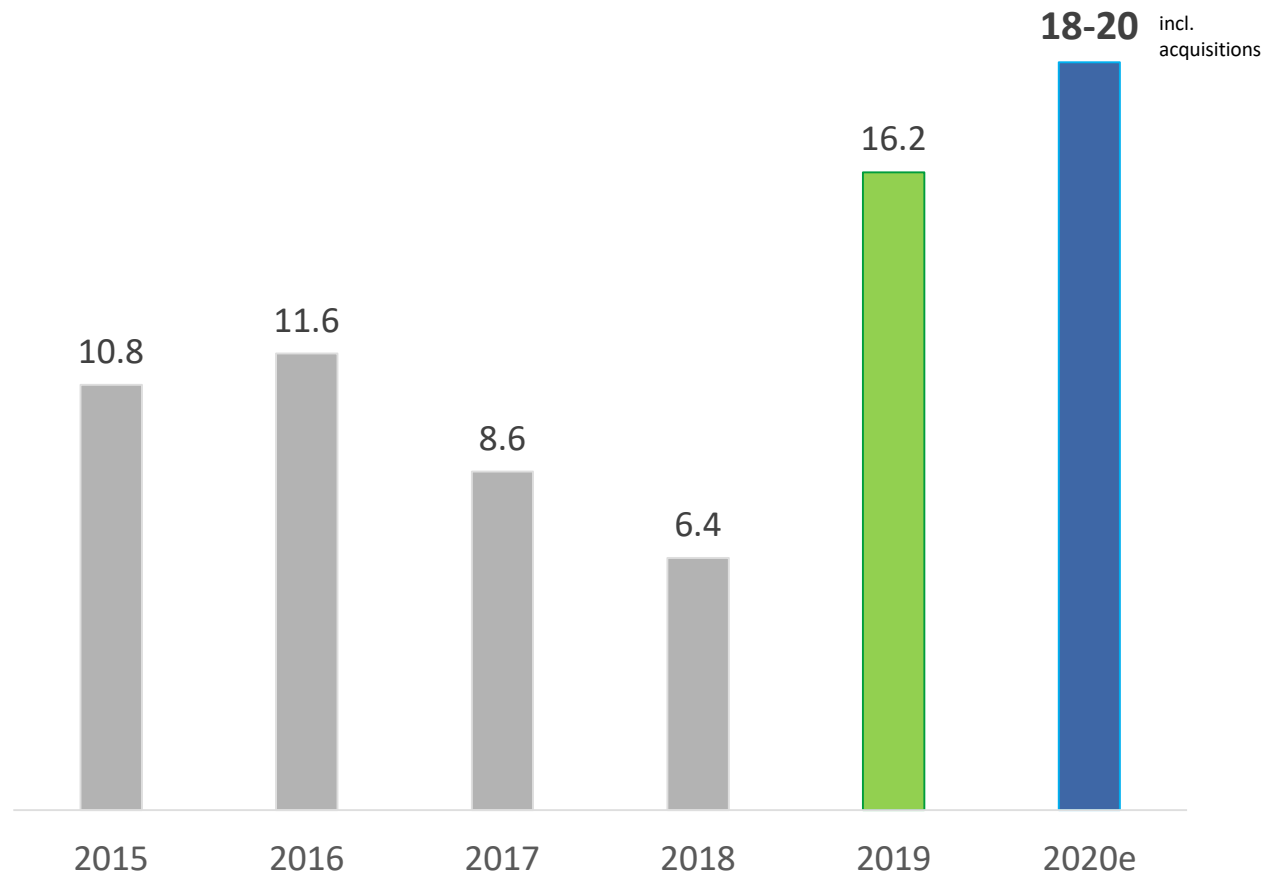
16% above previous year



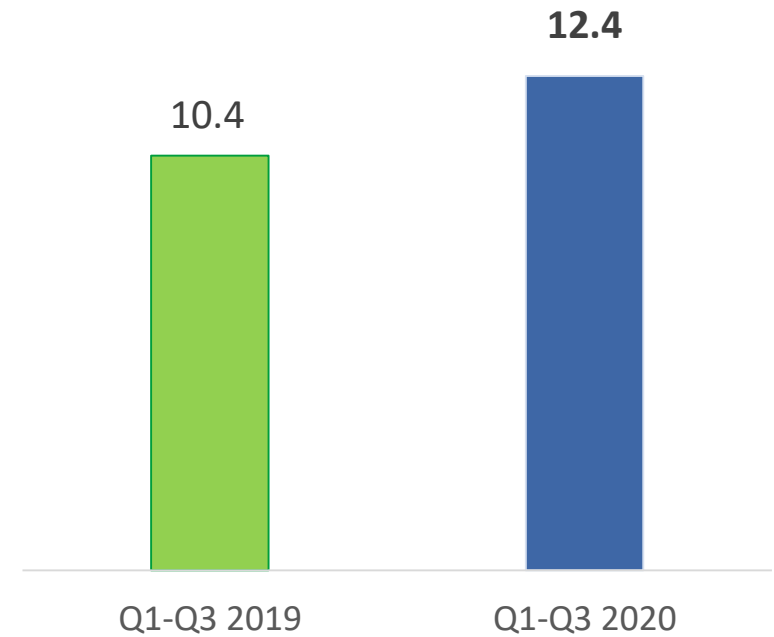
EBIT

(EURm)

EBIT margin increased to 10.4%

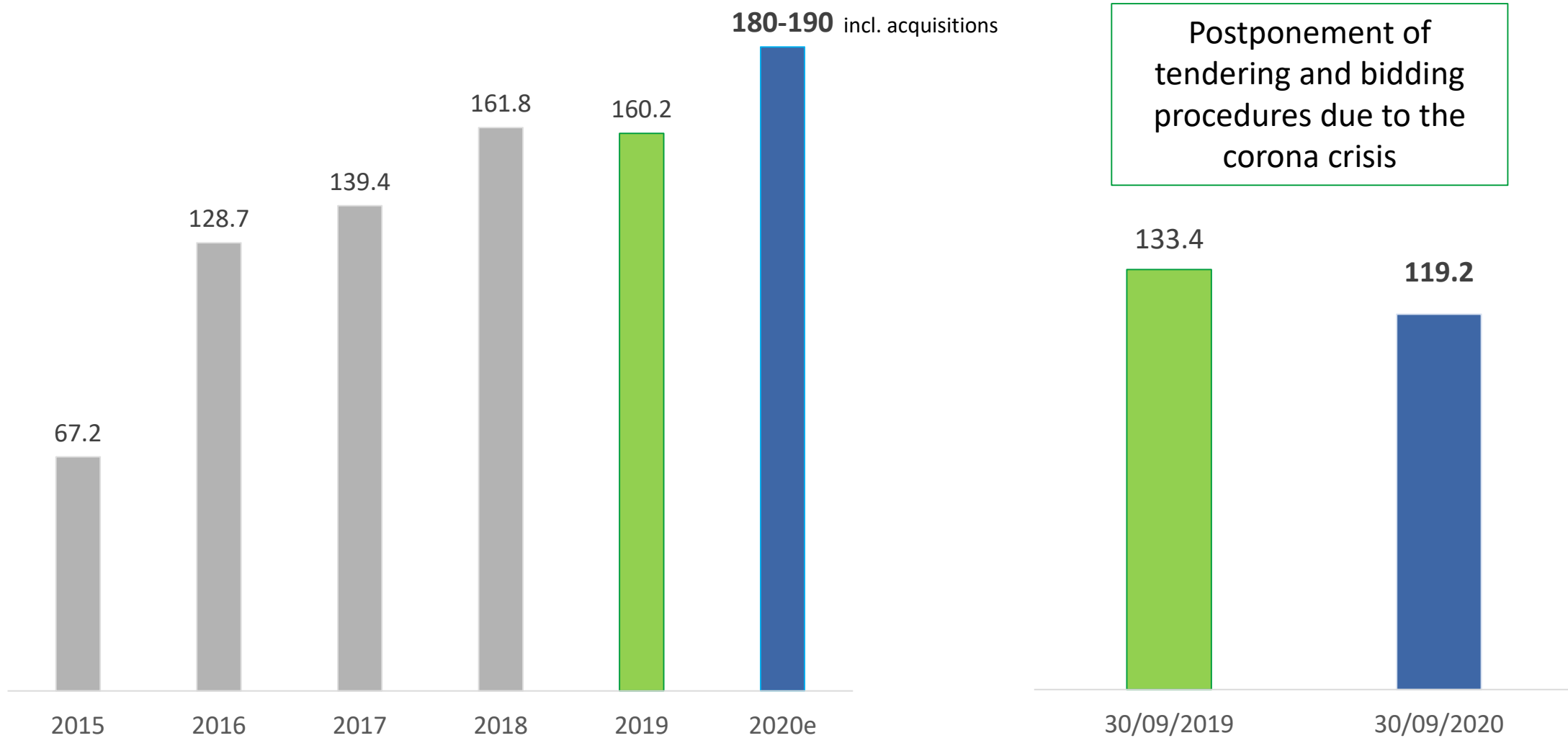


19% above previous year



Incoming orders

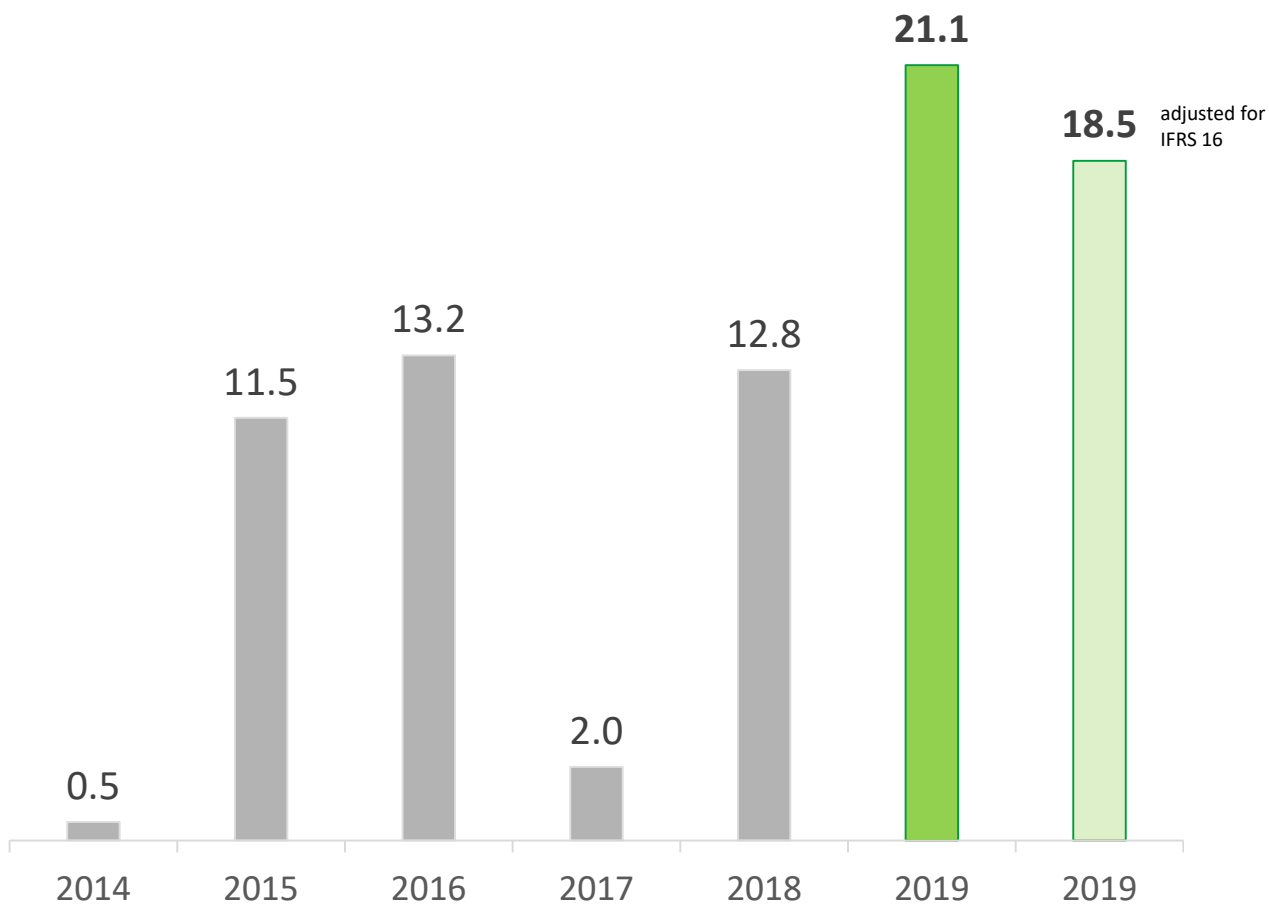
(EURm)



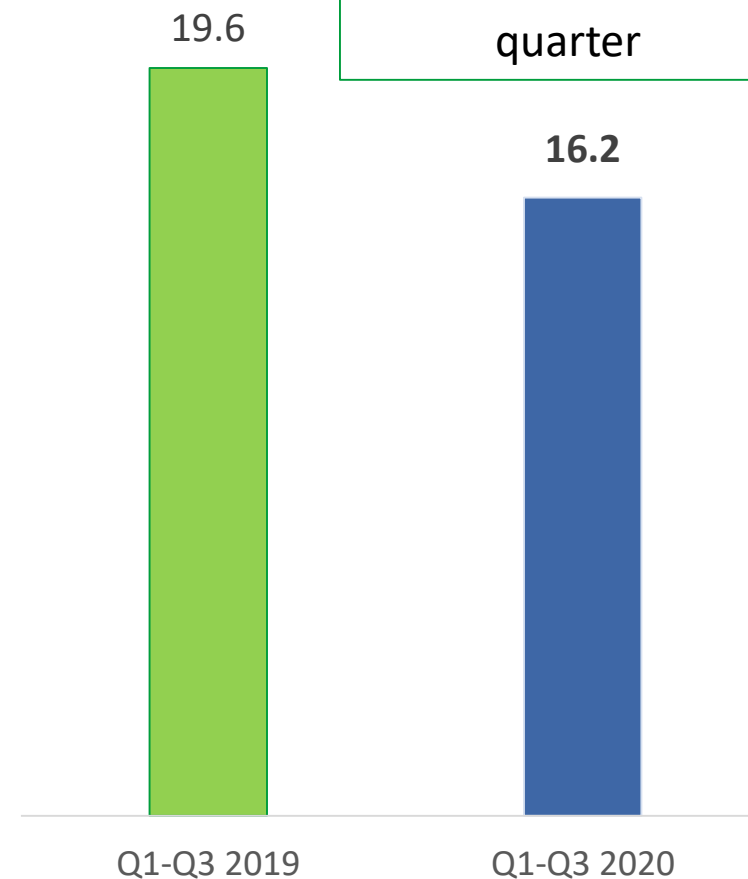
Operative cash flow

(EURm)

Cash flow nearly doubled compared to previous year

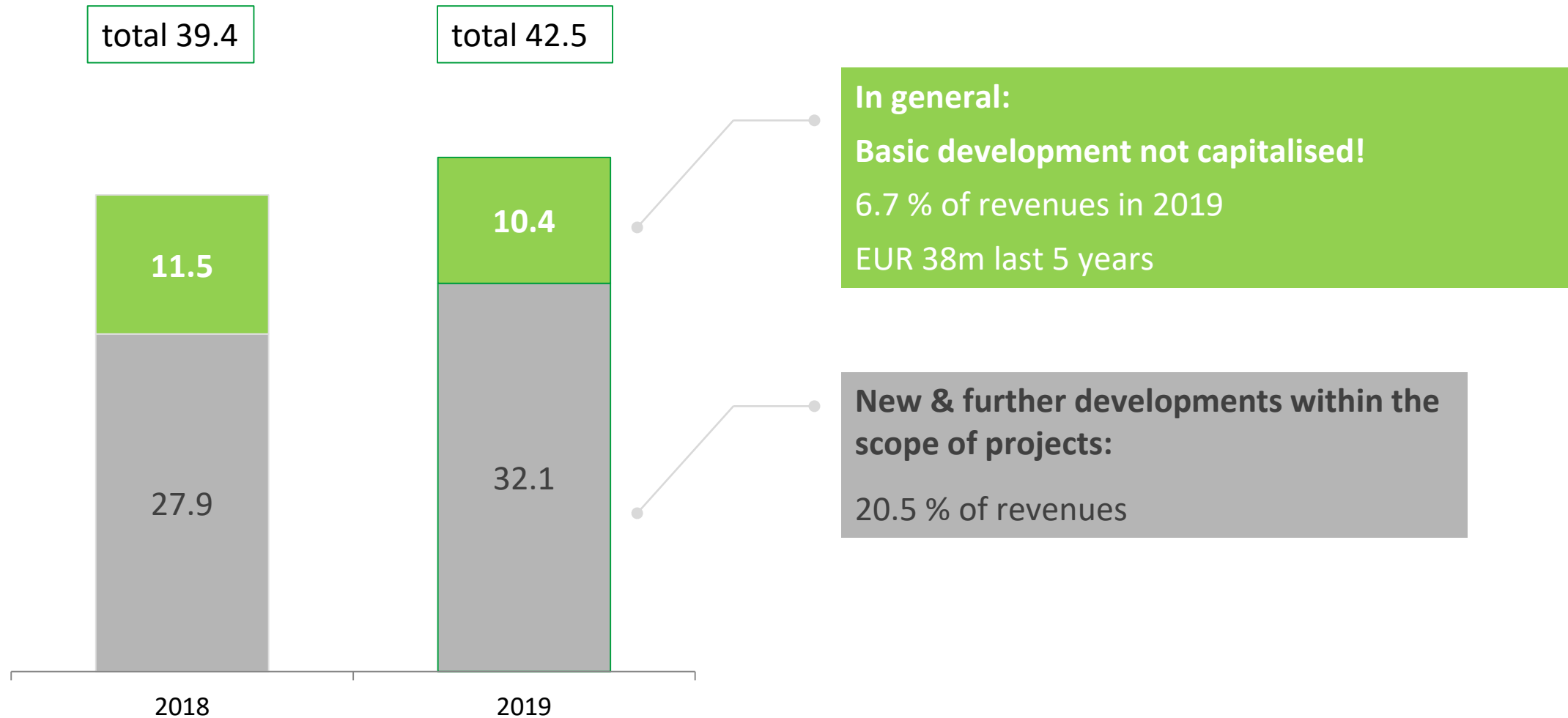


expected to improve further in fourth quarter



Expenditure R&D

(EURm)



Strategic Roadmap

continued sustainable annual growth of 15 percent on average

➡ already achieved for 2019





Thank you!

init

Financial Calendar 2021

25 March 2021

Annual Report 2020

11 May 2021

Quarterly Statement Q1 2021

19 May 2021

Annual General Meeting

IR-contact

init innovation in traffic systems SE

Kaeppelstr. 4-10

76131 Karlsruhe

ir@initse.com

www.initse.com